

Campbell Scale Models



Kit #362 - HO PASSENGER SHELTER Assembly Instructions, #36201

This structure is designed to serve equally as a commuter station for a steam railroad, an interurban electric railroad, or as an added shelter, "across-track" for a more elaborate depot. While some modeling liberties have been taken, this kit has been scaled from an authentic prototype design, and today many such structures are yet in use.

The kit lends itself to a number of variations...it can be divided to be used as two small facilities or two kits can be combined to provide larger facilities. In such cases, the shelter portion can be held in two bays, increased to three bays, or doubled to four bays as desired.

Your commuterville station will be especially attractive if you give it a two-color paint job. If you choose a single color, painting can be deferred until the structure is completed. A two-color paint scheme is best applied before assembly. It requires some thought and study in order to identify the wood parts properly and to determine which color to apply to the various parts of the sub-assemblies. The photograph reproduced above and the larger photo found in this box shows the completed model and illustrates a typical two-color scheme. If you build the platform as planking, we suggest a weathered stain finish. If your preference is simulated asphalt or concrete, paint the unscribed side of the platform grimy black or concrete gray. The slab floors of the Restrooms and Restroom porch and the Company Telephone Booth are painted concrete gray.

PLATFORM

Step 1: On the bottom side of the large Platform Deck (1/16" x 1-3/4" x 9-7/8"), on Laser-cut Board #1, mark off four equal spaces. Two 1/8" x 1/8" x 9-7/8" Floor Beams are glued to each edge of the platform flush with the planked top surface. *Note: if you plan to finish the platform as "black-top" or "cement slab" the scribed side should be turned down. Glue the three remaining supports on the marks you made previously, see the drawing sheets.*

SHELTER and ROOF SUPPORTS

Step 2: *This is the most critical part of the construction of this structure, and much of the satisfactory appearance of the finished model will depend on the care taken to make each of the five assemblies neat, square and interchangeable.* An assembly template on the drawing sheets is provided to aid you with this portion of the work. However, we recommend that instead of merely using this drawing as a free hand guide, you construct a jig on the template using scrap strip of wood. This will ensure that each of the roof

support assemblies is a perfect match.

Step 3: Build a jig by taping the template drawing to a small piece of flat scrap wood. A piece of plywood 3" x 3" will do. Glue space blocks cut from scrap strip wood to the template, fitting them to one of the notched Vertical Posts (.115" x .115" x 1-3/4"). Other spacer blocks are glued to the template along the angle of the Rafters and Cross Braces.

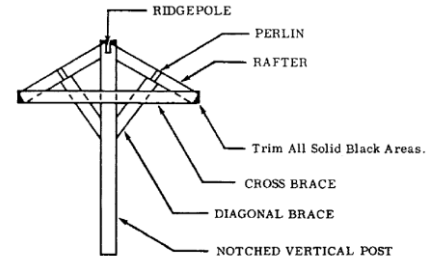


Fig. 1, See the drawing page 1 (Figure 1) for correct scale template.

Step 4: After the spacer blocks are properly glued into position, give the entire jig a light coating of wax so the Roof Support pieces may be glued to each other without adhering to the jig, household "spray" wax works fine. It will also be helpful to construct simple cutting jigs for the Rafters and Diagonal Braces to insure that each of these pieces are cut identically and to the proper angle.

Step 5: To assemble a Roof Support in the completed jig, lay a Cross Brace, cut from 1/32" x 3/32" material in the jig, and then lay one of the notched Vertical Posts, with a small dab of glue in the notch, over it. Be sure the Cross Brace is seated properly in the notch milled in the Vertical Post.

Step 6: Fit and glue the two Rafters (3/64" x 3/32") into position. Fit and glue the Diagonal Braces into place and then glue the second Cross Brace into position.

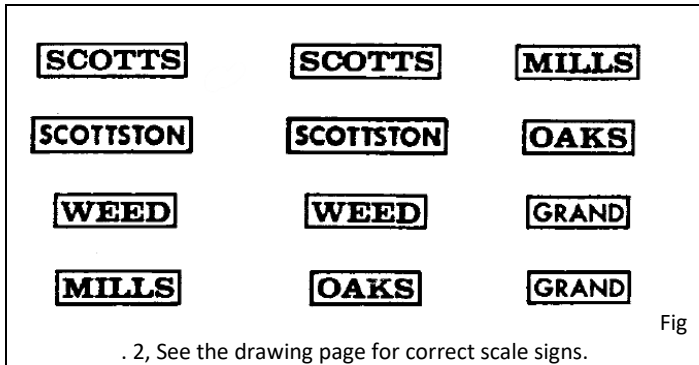
Step 7: Before lifting the assembly from the jig, trim the top of the Vertical Post to match the angle of the Rafters and trim the outer ends of the Rafter and Cross Brace assembly to the angle shown on the template.

Step 8: Five Roof Support assemblies are required. If you are using a two-color paint scheme, we suggest you now paint the Roof Supports with your trim color. An alternate plan would be to paint them with your principal color on the Vertical Posts only, up to a height of four HO scale feet.

SIGNS

Step 9: There are a number of signs to be used on the completed structures. Names of towns are furnished in quantity so you may have a choice. These names are dimensioned to be placed on either end of the Shelter structure on the scribed paneling of the Cross Braced assembly. "Men" and "Women" signs may glued to the Side Walls and Entry Screen front of the Restroom building. Cut the signs of your choice from the instruction sheet and glue to light weight card stock, then cut carefully around each sign with an X-ACTO® knife or sharp blade and place as suggested or desired.

Campbell Scale Models



The balance of the construction of the Shelter structure will be completed after the Roof Sections are assembled.

ROOF SECTIONS

Step 14: Cut the Roof Cards along the outer edges and through the centers on the broken lines as indicated. Note: Lasered cards only require cutting the small bridges of material to remove the roof cards. The ruled lines are guides for laying the rows of shingles. From the roll of "Profile Shingles", cut shingle strips slightly longer than the roof card.

The shingle material is gummed. Moisten only the unnotched edge with a small paint brush dipped in water and apply the strip along the printed guide lines, starting with the wide strip along the bottom edge of the card. The last course is applied by moistening the notched edge and allowing the unnotched edge to extend beyond the top of the roof card. When all the shingle strips are on the card, allow it to dry under pressure to prevent warping. When the roof card is thoroughly dry, trim the ends of the shingle rows leaving about 1/32" extending beyond the card. Trim the excess shingle material at the top of the roof card flush with the card top. The same shingle material and card is provided for the roofs on the Shelter, Restrooms and Company Telephone Booth and the application is identical in each case.

COMPLETING THE SHELTER

Step 15: On the underside of the shelter roof card, draw a line across the width of the two Shelter Roof Cards at the exact center. Next, find the length of the rear wall, measuring from the center of one end wall roof support rafter and cross brace assembly to the center of the opposite rafter assembly. *This should be approximately 24 HO scale feet.* Mark off exactly 1/2 the distance each way from your penciled center line on the roof cards. Then mark off positions for the two support assemblies on the extreme ends of the Shelter Roof by starting from the previous support assembly marks and measuring out 12 HO scale feet and drawing a guide line. Since all the lines you have drawn are centerlines that will be covered when the roof supports are glued into place, we suggest that you place additional marks on each side of these centerlines using one of the roof support assemblies as a guide to the spacing of these lines. This will aid you greatly in proper alignment of the support units when gluing them into position.

Step 16: On one of the pieces of marked roof card glue the two roof supports that have previously been joined to the shelter assembly. Be sure they centered carefully on the guidelines you measured off earlier using the secondary lines to aid you in the proper placement, and that the peak of the ridgepole side of the roof card exactly matches the peak of the vertical post of each roof support. Clamp the roof card to the rafters using a spring-type hair clip while the glue is setting.

Step 17: When it is dry enough to handle, glue the center roof support to the roof card. Take care that its rafters and cross braces are parallel to the two attached supports and that the angled end of the rafter and cross brace assembly extends beyond the face of the rear wall the exact distance of the others.

Step 18: Glue the two end roof supports to the roof card, again

SHELTER WALLS

Step 10: Glue the edges of the three pieces of 1/32" x 1-1/8" x 1-7/32" vertically scribed siding together to form the Rear Wall. Before gluing, "break" both edges of the center piece and one edge of each of the other pieces with fine sandpaper so the joint will match the scribing. When the glue has set and it can be handled, cut three Wall Studs out of the 3/64" square material and glue them into place with the two outer studs set in 1/32" from the edge (the thickness of the Side Wall Siding). Divide the wall into four equal horizontal sections, cut ten pieces of 2x4 (.023" x 3/64") to fit horizontally between the Studs. The top and bottom horizontal pieces are glued flush with the top and bottom edges of the Wall Siding.

Step 11: Cut and fit two End Wall panels, ten boards wide, from the scribed siding material. Study the drawing carefully and you will notice that the Rear Wall of the Shelter is designed to fit underneath the Roof Support Cross Brace and Rafter assembly with the angled portion of this assembly extending beyond the face of the rear wall. The edges of the End Wall should fit flush against the Vertical Posts. Glue the End Wall panels to the Rear Wall and fill in the 2x4 horizontal pieces to match those already glued to the Rear Wall.

Note: *The complete Shelter Wall should match the height of the Roof Support assemblies measuring from the underside of the Cross Brace to the bottom of the Vertical Post. If it does not match, sand the top or bottom edge of the Shelter Wall.*

Step 12: Cut and fit the scribed (GP) wall panel material to fill in the upper portion of the four Roof Support assemblies as shown. Note that the two assemblies to which the End Walls are attached also have "filler" panels over the front Diagonal Braces. Since the upper portion of two of the Roof Supports have been filled with scribed (GP) paneling on one side only you will have a definite "right" and "left" Support. Glue the Shelter Wall assembly to these two assemblies making sure that the panel sides face outward.

Step 13: Scribed (GP) planking of 1/32" x 3/16" x 3-1/2" is supplied for the Bench Seat. Notch the five Bench Supports as shown on the drawing to fit the 2x4 horizontal pieces and glue them into place. Glue the Seat onto the Supports gluing the front edge of the Seat flush with the front of the Supports. The Seat section is three boards wide. The piece of planking for the Bench Backrest is 1/32" x 1/4" x 3-1/2" (four boards wide). Glue the bottom edge of this planking to the back edge of the Bench Seat, allowing it to slant back on the Rear Wall, while resting on the five Bench Supports.

Campbell Scale Models

making certain that the rafters and braces are parallel to the supports already in position. Do not forget to turn the outer support assemblies so their scribed paneling faces outward.

Glue the other shingled roof card into place using the same care so that the rafters are correctly aligned and accurately positioned on your pencil marks. Clap the supports to the roof cards until the glue has dried thoroughly. Lay a small bead of glue in the vee formed by the open joint between the two pieces of roof card and install the cap strip which has been cut from 3/64" square wood. Stain the shingles and cap strip as desired.

Step 19: Using the 3/64" x 3/32" material cut the purlins to fit between the rafter assemblies as shown in the drawings and glue them in place. *Note that the purlins join the rafters at the diagonal braces after the glue is dry, if you want to paint the ceiling, this would be a good time to do so.*

Step 20: Trim the pre-cut fascia strips (1/32" x 3/32" x 7-1/4") to be 1/16" shorter than the length of the roof card. Glue these pieces 1/32" in from the edge and centered lengthwise on the underside of the card. From another piece of this 1/32" x 3/32" wood, cut two sections to fit the pitch of the roof on each end and angle-trim them to meet the front and back fascia strips, making sure these pieces are also set in 1/32" from the edge of the roof card.

Step 21: You are now ready to fasten the Shelter structure to the Platform. The first step is to mark the platform in the same manner as the underside of the roof. That is, establish the center and mark off each way from that point, the placement of the vertical posts of the roof supports. The vertical posts are positioned on these lines so the back edge of the shelter is flush with the back edge of the platform.

Since it is unlikely that the five vertical posts of the roof supports are truly vertical while attached at only the top, you will need a means of holding them in proper position on the platform while the glue is drying. Insert a common pin into the end of each post about 1/8" deep in the exact center. Remove it, cut it to a length of about 1/4" and reinsert it with the point exposed. When all five supports are equipped with such guide pins, and before gluing, press the pins into the marked positions on the platform. Using a small square or your eye, check the posts to see if they are vertical, aligned and square with the platform. You may find it necessary to shift the bottom position of one or more vertical posts to ensure these three things. Be careful and patient for the proper appearance of the finished model is dependent upon the accuracy of the posts positioning.

Step 22: After you have determined the proper position of the posts on the platform, remove the assembly, put a small dab of glue on the pins, post ends and bottom edge of the wall assembly and press the pins back into place on the platform. Light rubber bands around the roof and the platform will hold the assembly firmly while the glue is setting, but make sure you do not have too much tension on the rubber bands or you will distort the roof.

SALT BOX or TOOL BOX

Step 23: Make the Salt Box or Tool Box from the scribed material and trim with 1/16" x 1/16" angle. Use the drawing as a guide. The finished box can be installed anywhere on or near the platform as you choose. The barrels can be painted to match the structure, to serve as trash containers, or painted red to serve as fire barrels.

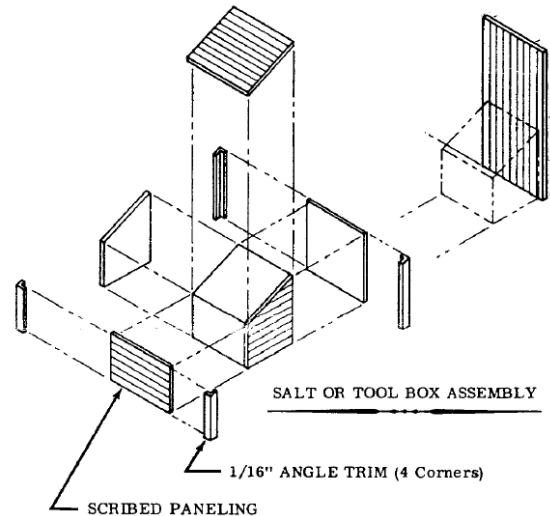


Fig. 3, See the drawing page for correct scale images.

RESTROOMS

Step 24: (there are two different options for this step, read both before proceeding)

Glue the 3/64" square corner posts flush with the ends of the side walls (1/32" x 1 3/32" x 1" scribed material). Set aside to dry. Next, install two doors on the front wall of the Restroom (1/32" x 1 3/32" x 1 3/8" scribed peak material), using one of the possible methods:

Method 1: The doors and door trim can be glued directly to the front wall material. Locate the exact center of the front wall, and glue two pieces of the 1/32" x 3/32" x 61/64" door trim horizontally and flush with the bottom. Glue the doors against the trim, and then add two additional 1/32" x 3/32" x 61/64" door trim pieces flush with the outer edges of the doors. This should leave enough room at the outer edge of the front wall for the 1/16" angle trim. Finally, glue the top door trim (1/32" x 3/32" x 1-3/8") along the top of the doors and side trim pieces. You may need to use a razor blade or X-ACTO® knife to cut the outer edges of the top door trim piece to align with the peaked gable.

Method 2: Alternatively reinforce the entire back of the front wall with Scotch Mending Tape and cut out the door openings. Each door opening should be 27/64" wide with a Y4" space between them. With this method, the door trim pieces are not used.

Glue the doors in place and then glue the Front Wall to the Side Walls. Glue the side walls to the rear walls taking care that all the walls and corners are square. Glue the 1/16" x 1/16" x 2-1/8" material to the center of the rear wall to serve as a vent as illustrated. Glue the 1/16" x 1/16" angle trim to the corners of the walls, trimming to match the roof angle. Fit and glue the 3/32" square ridgepole into place between the peak of the front and back walls. Cut and notch the roof cards to clear the vent and apply the

Campbell Scale Models

shingles. Glue the roof cards into place with the top edge of each card in exact alignment at the peak of the gabled front and rear walls. Cut and fit the cap strip from 3/64" square lumber and glue into position. Stain the cap strip and shingles to match the shelter roof.

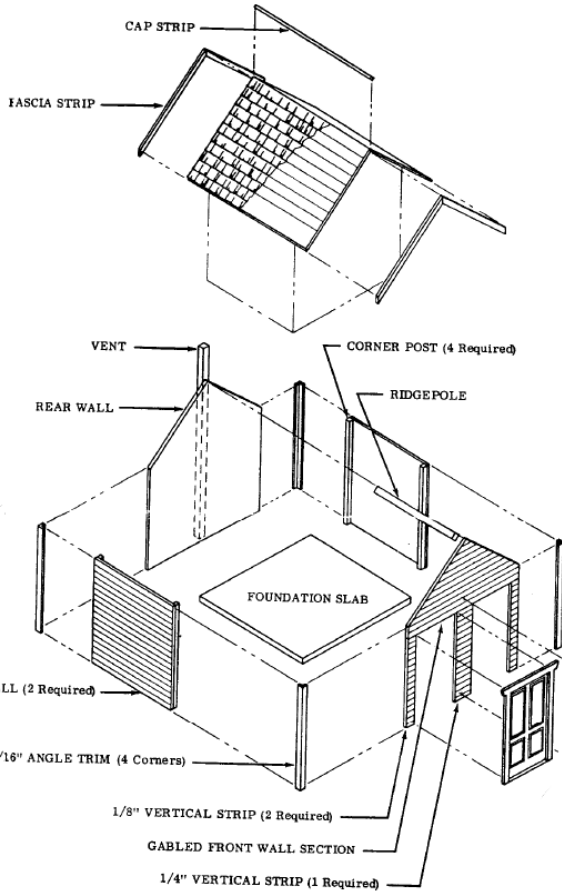


Fig. 4, See the drawing page for correct scale images.

Step 25: Cut fascia strips from the remaining 1/32" x 3/32" wood and glue in place as you did on the shelter, using the restroom drawing as a guide. Edge-glue the restroom foundation slabs together, centering the 1/16" x 1-3/8" x 1-5/16" slab with the entry screen slab (1/16" x 1-1/8" x 2-5/8").

RESTROOM ENTRY

Step 26: The entry screen is made by gluing the scribed panels (1/32" x 3/4" x 7/8") to three 3/64" x 3/64" x 1-1/16" posts. Fit 0.023" x 3/64" (2x4) stripwood to the top and bottom edges of the screen panels. The posts should extend 5/32" beyond the screen at the bottom and 1/16" at the top. From the remaining piece of 1/32" x 7/8" scribed wood, cut a divider panel nine boards wide and glue a 3/64" square post to one end to match the post and front screen assembly. Now, glue the other end of this divider panel to the middle post of the front screen. Add the 2x4 strip wood at the top and bottom of the divider panel.

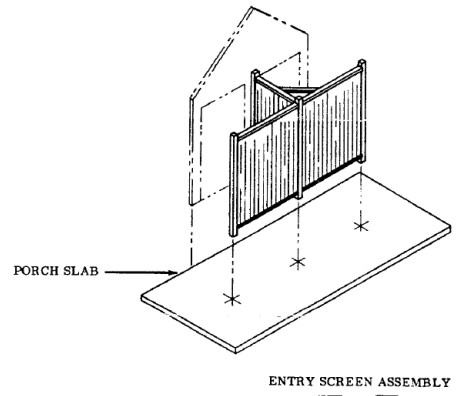


Fig. 5, See the drawing page for correct scale images.

Step 27: Glue the restroom to its foundation slab. Glue the entry screen assembly to its foundation slab, centering the divider panel between the doors (see drawing). Add the small diagonal braces to the top edge of the screen using scraps of 2x4 strip wood as illustrated.

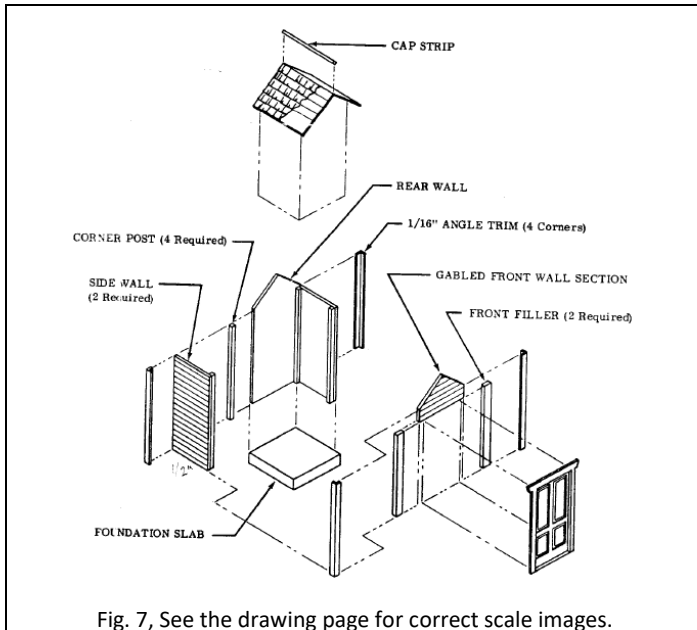


Fig 6, See the drawing page for correct scale signs.

COMPANY TELEPHONE BOOTH

Step 28: Glue 3/64" square corner posts flush with the two side walls (1/32" x 1-3/32" x 1/2" scribed wood). Glue the peaked rear wall to the side walls taking care to keep the three walls square and flush at the bottom edge. The door and door trim can be glued directly to the front wall. First, glue the 1/32" x 3/32" x 61/64" side door trim pieces horizontally flush with the outer edges of the peaked front wall. Glue the door between these pieces, then glue the 1/32" x 3/32" x 21/32" door trim along the top of the door. Glue the front wall assembly to the side walls. Install the corner trim, cutting it from 1/16" x 1/16" angle material, trimming the tops of the angle, to match the angle of the roof. Now it is the time to apply the shingles to the two roof cards and glue them in place as you did for the restroom and the shelter, positioning the top edge of each roof card exactly at the peak of the gables. Cut a cap strip from 3/64" square material and glue into place. Stain the cap strip and shingles as on the other units. Finally, glue the Telephone Booth assembly to its foundation.

Campbell Scale Models



Step 29: Install the Shelter, Restrooms and Company Telephone Booth in the positions most suited to your layout. Although not included in the kit, we might suggest a walkway of planking or simulated concrete if the restrooms are not placed adjacent to the Platform.

If you have not completed all painting or touch-up painting of the three structures, now is the time to do this and your station is complete. The Shelter Platform can be further detailed by adding a newspaper rack, mailbox, or additional benches, etc. Figures can be added to simulate brisk and thriving commuter traffic and to provide that final touch of realism that gives any model railroad structure its own special personality.

20210522tdm

Note: If you should find any misspelled words, incorrect text or numbers, please contact Campbell Scale Models via their website: campbellscalemodels.com. Thanks.