

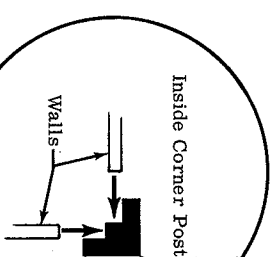
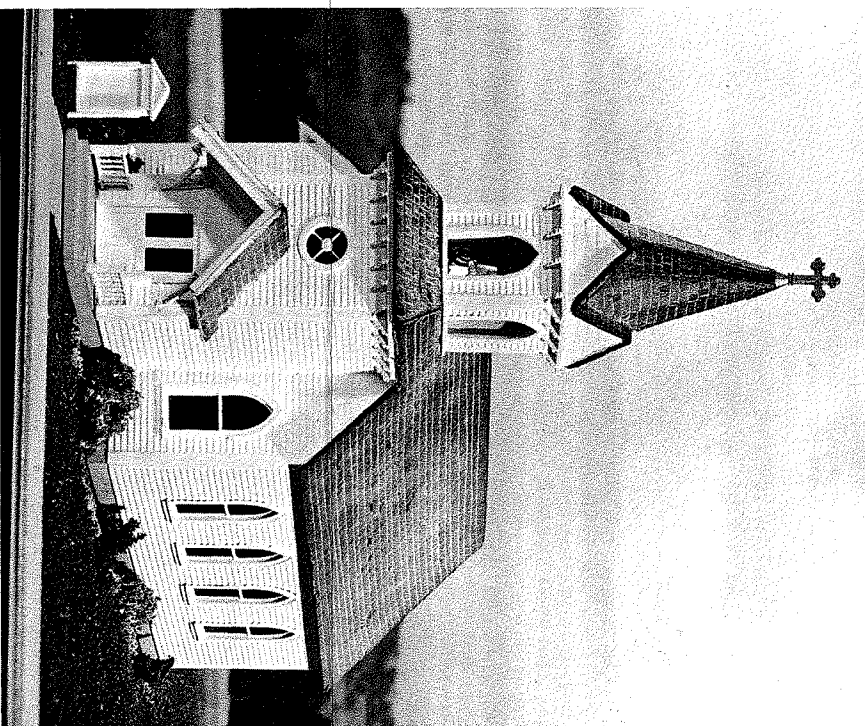
Community Church

ASSEMBLY INSTRUCTIONS

NOTE: Before starting the assembly, sort and identify the parts, and be sure you visualize each step. Many of the wood parts have been cut to size and length, and should need no further work. Where the wood must be cut, the instructions will tell you what to do.

A. ASSEMBLE THE WALLS.

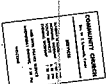
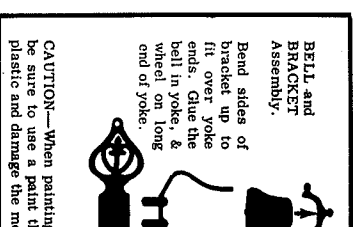
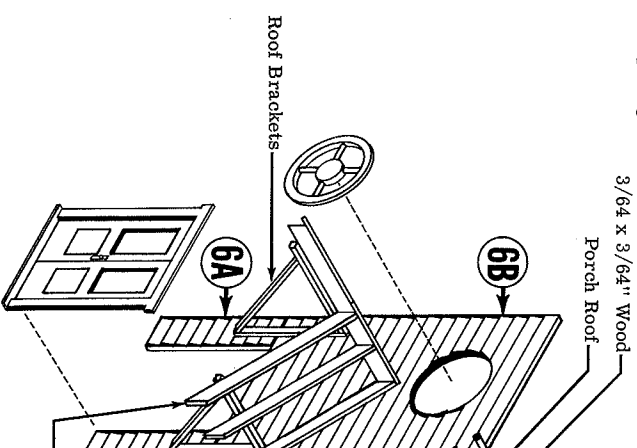
1. Paint all the wall pieces. We suggest white as the most usual color for the typical small church. After the paint has dried, go over it lightly with fine steel wool for a smoother finish when you put on the finish-coat later. Also paint the window frames and the door. **CAUTION**— These are molded in plastic, and must be painted with a paint that will not attack the plastic.
2. Cut the "stained glass" window transparencies to fit the window openings. As you do this, number each one, and number the window it fits as the window openings may vary slightly. Set the transparencies aside for use later.
3. Edge-glide the two parts of the back wall 2A and 2B together. Edge-glide the top and bottom parts of the two front walls 4A and 4B and 8A and 8B together. Mark and cut the tops of 4B and 8B to exactly match the slant of the back wall 2B.
4. Cut the fascia strips (1/16 x 5/32") to fit on the top edges of the back wall. The ends will have to be slanted as shown. Glue them to the wall, flush with the back surface of the wall. Do the same for the fascias at the tops of the front walls 4 and 8.
5. Glue the inside corner posts to the longer edges of walls 4 and 8. Fit the wall spacer 9 between the tops of the inside corner posts so that the front wall is now exactly the same width as the back wall. If necessary, sand the edges of 9 to make an exact fit. Find the block (1/4 x 1/4") that is the same length as 9 and glue it between the bottoms of the inside corner posts (sanding it to length if necessary), and glue 9 at the top, flush with the back surfaces of the inside corner posts, and with the slanted edges perfectly in line with the tops of the fascias on walls 4 and 8.
6. Slant the tops of the four medium length corner posts to match the slant of the roof line, and glue one on each side of the front and back walls.
7. Glue the side walls to the corner posts that are on the end walls, thus forming the four main wall assembly. Find the two pieces of 1/8 x 1/4 x 5" wood strips, and cut them to just fit between the corner posts along the tops of the side walls. Glue them in place flush with the tops of the side walls as stiffeners. Cut the ridge pole (1/4 x 1/4") to length to just fit between the peaks of the front and back walls, and glue it in place.
8. Edge-glide the two parts of wall 5 together (the higher piece above, with the fascia milled on at the top). Repeat with the two pieces of wall 7, and glue them to the inside corner posts. Edge-glide the two parts of wall 6A to the bottom of 6B to form the doorway. Glue the two longest corner posts to walls 5 and 7, and add wall 6 to form the entry.
9. Glue the entry ceiling (1/4 x 1/4 x 1 3/4") on top of the entry walls. It should fit on top of all four corner posts, with an overhang of 5/32" at the front and on each side, and it should butt against the fascia of walls 4 and 8.
10. The grooved 1/8 x 1/4" pieces are the foundation. They are cut long enough so you can mitre the corners if you wish. If not, cut them to length as shown. Fit them so the longer flange goes up inside the walls (see the drawing). The two 1/8 x 1/4" ungrooved pieces are spacers for the foundation, and should be fitted as shown. There is also foundation material for the entry. **NOTE:** All foundations must be notched for the corner posts.
11. Glue the porch (1/4 x 1/4 x 1 3/4") against the front of the entry and glue the step (3/4 x 3/4 x 1 1/2") to the front edge of the porch.
12. **ASSEMBLE THE BELFRY AND STEEPLE.**
13. Assemble the belfry sides have arched openings, and the back side is solid. Glue all four sides to the short corner posts. Glue the four sides to the floor (3/4 x 1 1/4 x 1 1/4") with a ledge on the three open sides, and flush with the back. Paint the inside of the belfry now. Draw a center line on the floor parallel to the closed back side. Drill two holes on the center line 5/32" apart, with a number 56, or 3/64" drill for mounting the bell.
14. Bend the sides of the bell bracket up to fit over the yoke ends. Glue the bell in the yoke, and the bell wheel on the long end of the yoke. Paint the bell brass or bronze color, and the bracket and yoke black. (Use paint that will not attack the plastic.) Glue the bell in place, with the "bolts" in the holes drilled above.
15. Glue the belfry ceiling (1/4 x 1 1/4 x 1 3/4") with a 5/32" overhang on all four sides. Sand a little slant on the top edge of the ceiling on all four sides.
16. Cut the four cards for the gable ends of the steeple. Glue shingles on each. The ruled lines are for the rows of shingles. Cut the shingles into strips long enough for each row, plus a little overhang at each end. The shingles are gummed, and by moistening along the un-notched edge with a small brush they can be applied along the guide lines while leaving the notched edge un-glued for a more uneven, natural texture.
17. In applying the shingles start at the bottom, with no overhang at the edge, and with the un-notched edge of each row on the guide line. For the top rows the shingles themselves will have to be moistened and glued above the preceding row, with the un-notched edge overhanging at the top. Put each piece under pressure until the glue is dry, then cut off the un-notched overhang at the top, and the ends of the rows overhanging the slanted sides of the gable ends.
18. Repeat for the shingles on the gable roofs. Allow a little overhang on the slanted edges of the two side gable roofs where they will meet the other roofs to form a "valley". There should be no gap at this point. Also allow about 1/32" overhang on the front edges of each.
19. Turn the roof cards face down, with their top (ridge) edges together, and tape them together. Gummed paper tape is good for this, or you can use "Scotch" pressure-sensitive tape. Glue the gable ends up inside the gable roofs, with a 1/16" or 3/32" set back, as shown. Glue the two

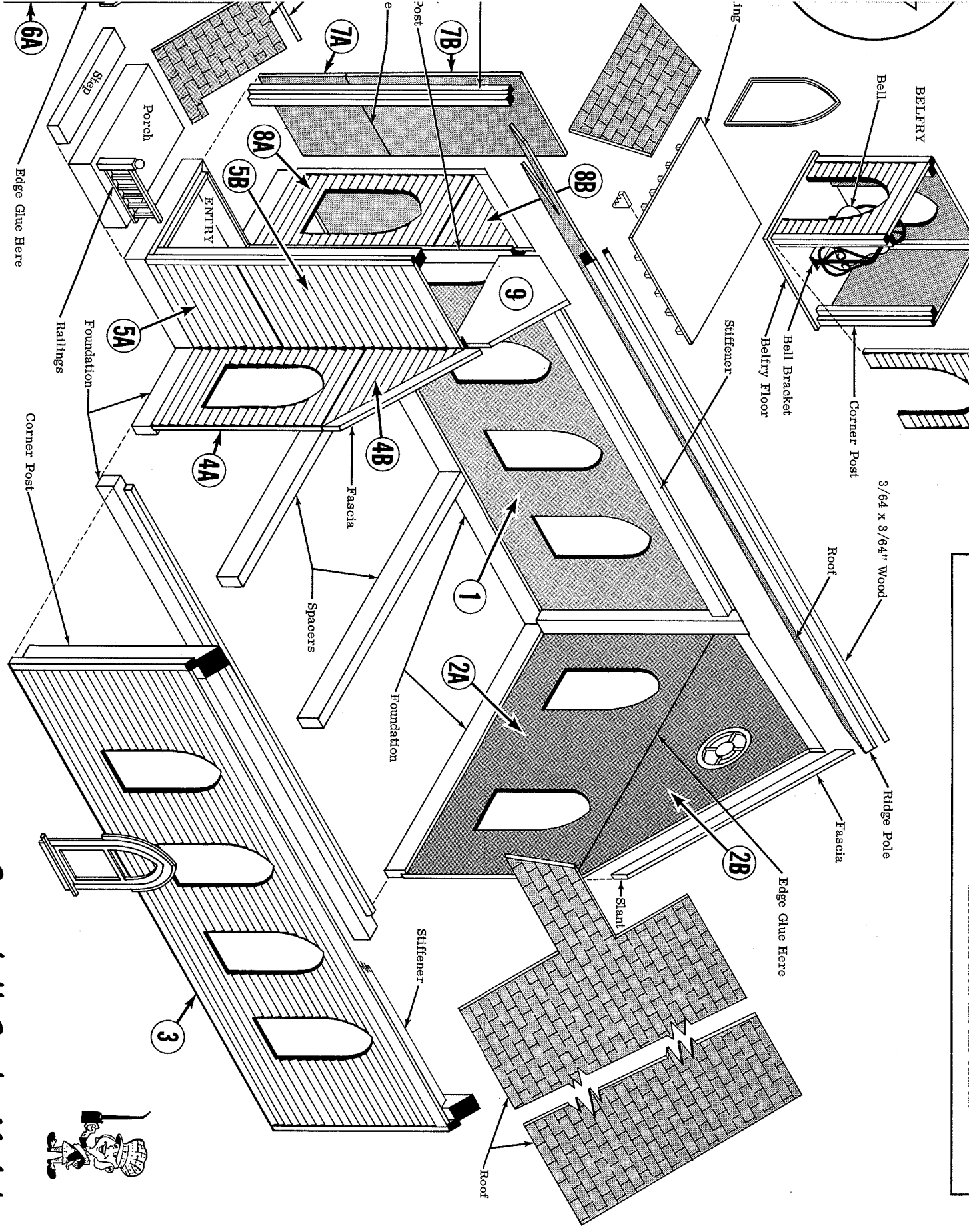
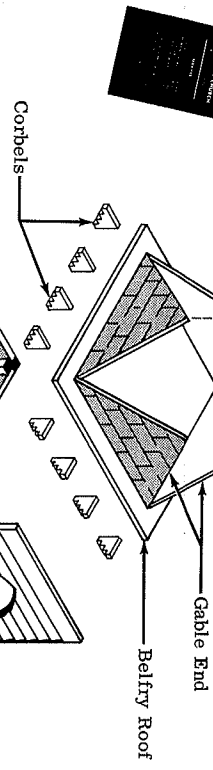
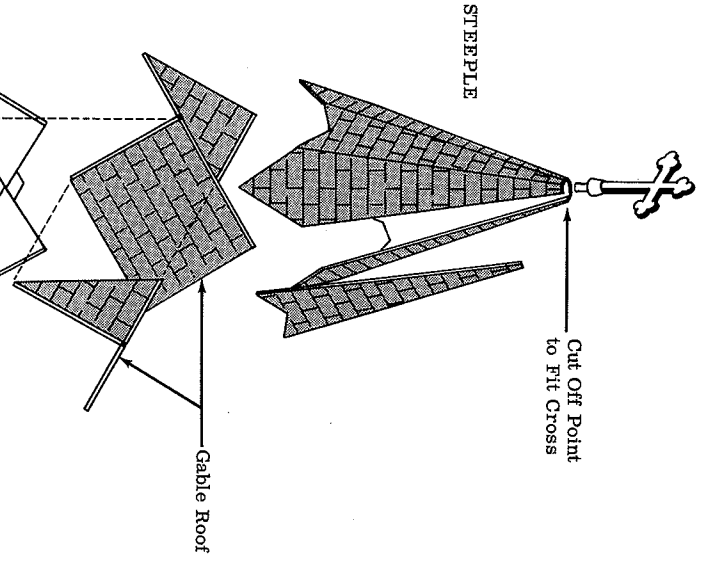
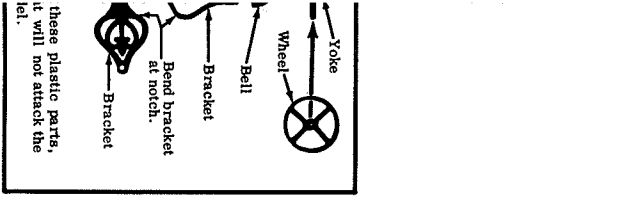


Entry Ceiling

20. Cut out the eight pieces of pointed roofs for the steeple. Lay them face down and "Scotch" tape them together — a tight fit on all edges. Make sure the shingle guide lines match all the way around. Fold the pieces into the eight-sided steeple, and "Scotch" tape the remaining seam, working the tape up inside. Hold the assembly so all the opposite sides are parallel, and spot-glide the seams so as to hold the steeple firmly in shape. After the spot-gluing has set, run a small bead of glue all the way in each seam for a permanent bond.
21. Glue the steeple to the gable roofs — making sure it is upright and does not lean. The lower points should fit firmly in the "valleys" of the gable roofs.
22. Add shingles to the steeple. You will have to cut short pieces to fit, and it is best to complete each side before going on to the next. Note that there are no ridge poles on the steeple, so the shingles on each of the eight sides have to fit tight together at the corners.
23. Cut off the point of the steeple, just far enough down to fit the Cross. Glue the Cross in place, facing the front of the Church. Glue the steeple and gable roof assembly to the belfry roof with an equal ledge on all four sides. Stain the shingles. Try-Scal The Stain is a very good color for this, giving a natural dark brown. Or you may paint the shingles any color you prefer. The shingles on the gable ends should be white.
24. Fit the window frames and door in their openings—you may have to sand the edges of the openings slightly. Glue the window frames in the openings. Glue the roof brackets (corbels) in place under the entry ceiling overhang with 5 on each side and 7 across the front, evenly spaced, and under the belfry ceiling with 4 on each of the four sides, evenly spaced. Glue the molded frames in the openings in the belfry (sand the openings to fit if necessary).
25. Paint the inside of the Church white in order to give maximum reflection through the "stained glass" windows. Paint the outside of the building its finish coat, and all of the trim.
26. Glue the window transparencies behind the window frames, being careful not to smear glue on the windows. A good way to do this is with tiny dabs of glue on the edges only, applied with the point of a pin. Cut a piece of white card and fit it inside the walls as a floor. This will increase the reflection of your lights through the beautiful "stained glass" windows.

27. **ASSEMBLE THE ROOF.**
28. Cut the two main roofs on the lines — **NOTE:** On the "dotted" lines, cut a little extra which can be trimmed for an exact fit. Check and fit the roofs so they meet properly with the small roof section that comes across the front of the entry.
29. Shingle the main roofs and the small front section. With these roofs, the lower, starting line of shingles will have some overhang beyond the bottom edge of the roof card when it is glued on the first guide line. Continue the shingles as in Step 14. When they are complete (and the glue has dried under pressure) trim the excess shingles at the peak. At the ends leave about a 1/32" overhang except where they must fit at the back of





the bellery and the slanting edges that mate with the small roof section that fits across the front of the entry. On the same front section trim the shingles on the top and slanting ends, leaving the overhang on the bottom only. Turn the main roofs face down and tape the peak, then glue the main roofs in place, and glue the small section across the front of the entry, with a snug fit under the edge of the bellery floor. Add a piece of 3/64 x 3/64" strip wood along the ridge, gluing it well down in the groove, and do the same at the corners of the piece across the front of the entry. Stain or paint the roofs as you did the steeple roofs in Step 19. Glue the bellery over the entry, with the bellery floor against the peaked spacer 9.

25. Cut the cards for the porch roof and add the shingles as above. Fit it to the front of the entry so the peak is 3/32" down from the round window opening. Mark the underside of the roof. Cut two rafters to fit the marks, and glue them just under the marks, mitred at the peak. The rafters are 1/32 x 3/32" wood. Cut four more rafters the same as the above. Glue the porch roof to the first two rafters, and glue the other rafters up under the porch roof.

26. Glue the porch roof brackets to the entry wall beside the corner posts. The long side of each bracket should be horizontal and up under the rafters. Paint the underside of the porch roof and the rafters.

27. Paint the foundation, the porch and the step concrete color. Cut the railings to fit, and paint and install them.

28. With the beautiful "stained glass" windows in this Church, it really deserves to be lighted so your visitors can see them. It is best to use a diffused light up there so there will not be "hot spots". (Lights are not furnished in the kit.)

29. After the building is in place, with flowers and lawn "planted" around and in front (flowers and lawn not furnished), paint and install the announcement board in front. Cut out one of the announcements to fit the board, and glue it in place.

30. A final, realistic touch would be to install a small phonograph speaker inside the Church, and play records or tapes of church music through the speaker.

The Church we have modeled was built in 1910 by the Trinity Lutheran Church of Santa Ana, California. The first minister was the Rev. Lankow who was followed by the Rev. Ruchnick.

The Rev. William Schmook was called there in 1919, and served this church for the next 23 years.

The bell was installed sometime in the 20's, and came from the old school building of St. Paul's Lutheran Church in nearby Olive, Calif.

Although this church never could quite afford stained glass windows, we have created some beautiful examples typical of the ones to be found in many churches in the U.S.

There is a Parish Hall and a Parsonage in back of the main Church building, but these are not included in the kit.

We have placed the name of Rev. William Schmook on the Schedule of Services in the kit in grateful acknowledgement to his son, Rev. G. T. Schmook, who furnished the background information about this fine Church.